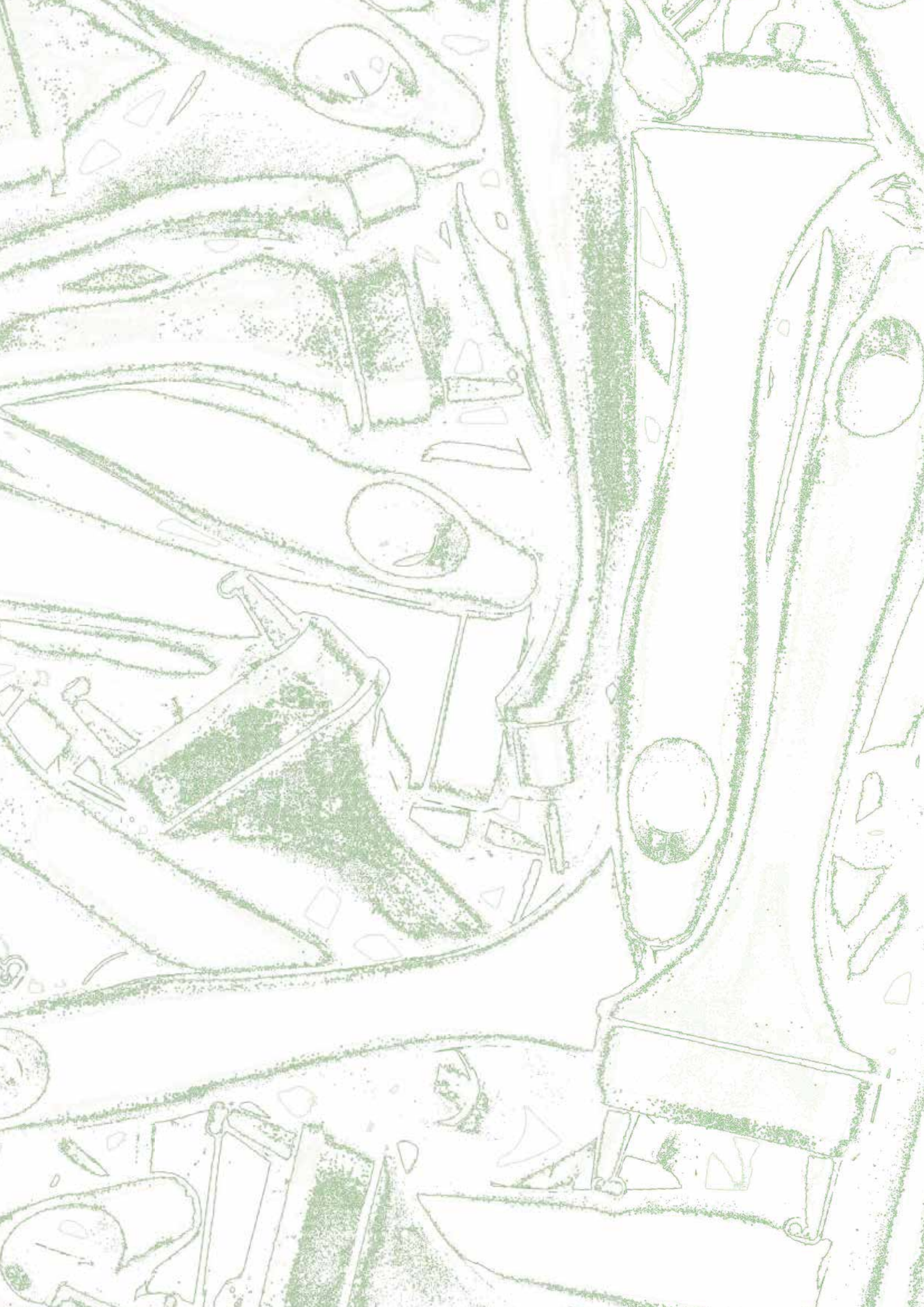


VIPPLAST

**manici in plastica
componenti
ghiere per pennelli**

**plastic handles
components
ferrules for paint brushes**





La **ViPLAST** è attiva da 45 anni nel settore dello stampaggio delle materie plastiche e da sempre si propone come partner per coloro che necessitano di produrre articoli in plastica.

Da circa 30 anni siamo presenti anche nel mercato degli articoli per pennelli iniziando con la produzione di manici in plastica, assicelle, ghiera ed altri componenti per l'industria del pennello.

Gli articoli di nostra produzione sono realizzati con le migliori materie prime e sono tenuti in costante aggiornamento in modo da offrire prodotti sempre in linea con le esigenze del settore.

Questo nuovo catalogo rappresenta solo l'attuale produzione della **ViPLAST** per il mercato dei pennelli.

Il settore infatti è in continua evoluzione e così pure la **ViPLAST** è sempre attenta alle esigenze ed alle necessità dei propri clienti con nuovi prodotti.



ViPLAST has been working in the moulded plastics sector for over 45 years, collaborating with customers who need to produce articles in plastic.

Over the last 30 years we have also been active in the paintbrush sector, producing plastic handles, plastic heads for wall brushes, ferrules and other components for the paintbrush industry.

The articles we produce are made with top quality raw materials and are kept constantly updated, so as to offer products in line with the demands of the market.

This new catalogue shows only the articles which are currently produced by **ViPLAST** for the paintbrush sector.

In fact, this sector is in constant evolution so that **ViPLAST** too is ever aware of the needs and requirements of its customers, offering them new products.

Art.0100



Manico plastica per pennellessa
Plastic handle for flat paint brush

misura		20x15	30x15	40x15	50x15	60x15	70x15	80x15	100x15
A	mm.	19	29	39	48,4	59	69	89	99
B	mm.	12	12,5	13,2	14	14	14	14	14
C	mm.	114	120	126	130	136	140	143	147
D	mm.	10	10	10	10	10	10	10	10

Art.0102



Manico plastica a due colori per pennellessa
Two colours plastic handle for flat paint brush

misura		20x15	30x15	40x15	50x15	60x15	70x15	80x15	100x15
A	mm.	19	29	39	48,4	59	69	89	99
B	mm.	12	12,5	13,2	14	14	14	14	14
C	mm.	114	120	126	130	136	140	143	147
D	mm.	10	10	10	10	10	10	10	10

Art.0105

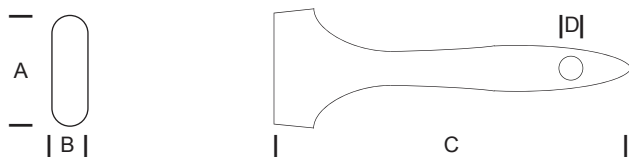


Manico bicomponente per pennellessa
Two-component plastic handle for paint brushes

misura		30x15	40x15	50x15	60x15	70x15
A	mm.	29	39	48,4	59	69
B	mm.	12,5	13,2	14	14	14
C	mm.	135	137	139	141	143
D	mm.	11	10	10	10	10

Manico plastica per pennellessa - tipo legno
Plastic handle for paint brushes wood type finish

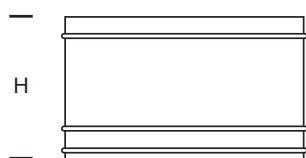
Art.0104



misura		20x15	30x15	40x15	50x15	60x15	70x15
A	mm.	20	30	40	50	60	70
B	mm.	12,5	13	14	14	14	14
C	mm.	138	138	150	156	156	156
D	mm.	9	9	9	9	9	9

Ghiera banda stagna per pennellessa
Tin plated ferrule for flat paint brush

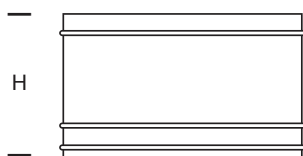
Art.0110 BS



misura		20x15	30x15	40x15	50x15	60x15	70x15	80x15	100x15
H *	mm.	28	28	28	32	32	34	34	34

Ghiera ramata per pennellessa
Copper plated ferrule for flat paint brush

Art.0130 RA



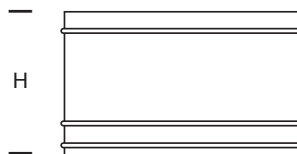
misura		20x15	30x15	40x15	50x15	60x15	70x15	80x15	100x15
H *	mm.	28	28	28	32	32	34	34	34

* altre altezze e misure sono disponibili su richiesta
* different heights and sizes are available on request

Art.0131 OT



Ghiera ottonata per pennellessa
Brass plated ferrule for flat paint brush

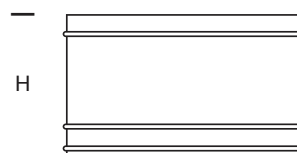


misura		20x15	30x15	40x15	50x15	60x15	70x15	80x15	100x15
H *	mm.	28	28	28	32	32	34	34	34

Art.0135 IN



Ghiera inox per pennellessa
Stainless steel ferrule for flat paint brush

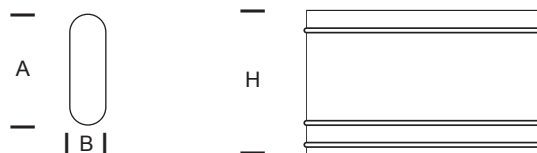


misura		20x15	30x15	40x15	50x15	60x15	70x15	80x15	100x15
H *	mm.	28	28	28	32	32	34	34	34

Art.0140 PL



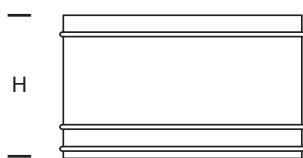
Ghiera plastica per pennellessa
Plastic ferrule for flat paint brush



misura		30x15	40x15	50x15	60x15	70x15
A	mm.	29,2	39,5	48,8	59,4	69,4
B	mm.	12	12,5	14	14	14
H	mm.	32	32	34	36	36

Ghiera nichelata per pannellessa
Nikel plated ferrule for flat paint brush

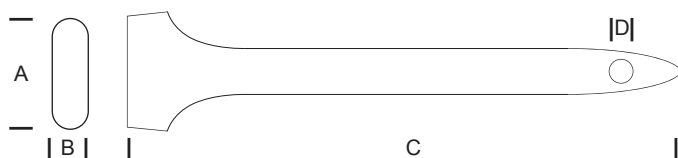
Art.0120 NK



misura		20x15	30x15	40x15	50x15	60x15	70x15	80x15	100x15
H *	mm.	28	28	28	32	32	34	34	34

Manico plastica per radiatore - tipo legno
Plastic radiator handle wood type finish

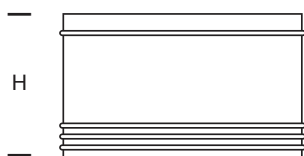
Art.0505 RA



misura		20x9	30x9	40x9	50x9	60x9	70x9
A	mm.	20	30	40	50	60	70
B	mm.	8,5	8,5	8,5	8,5	8,5	8,5
C	mm.	305	340	340	340	340	340
D	mm.	10	10	10	10	10	10

Ghiera banda stagna per "Radiatori"
Tin plated ferrule "Radiator" type

Art.0510 BS



misura		20	30	40	50	60	70
H *	mm.	40	40	40	50	50	50

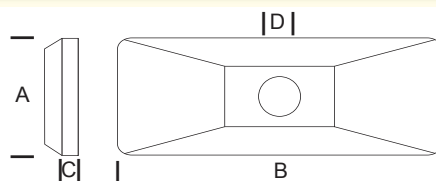
* altre altezze e misure sono disponibili su richiesta
* different heights and sizes are available on request

VIPLAST

Art.0200



Assicella per plafone
Plastic head for wall brush

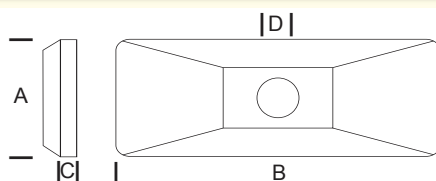


misura		7x3	10x3	12x3	14x4	14x4L	15x5	15x6	16x6,5	17x7	18x8
A	mm.	33	35	35	40	44	49	60	64	69,5	80
B	mm.	73	104	124,5	140	145	150,5	149,5	158	168,5	180
C	mm.	13	13	13	14,5	14,5	14,5	14,5	14,5	14,5	14,5
D	mm.	19	19	19	19	19	19	22	22	22	22

Art.0202



Assicella per plafone 2 colori
Two colours plastic head for wall brush

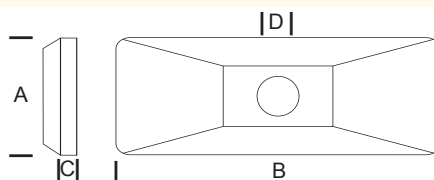


misura		14x4	15x5	15x6	16x6,5	17x7	18x8
A	mm.	40	49	60	64	69,5	80
B	mm.	140	150,5	149,5	158	168,5	180
C	mm.	14,5	14,5	14,5	14,5	14,5	14,5
D	mm.	19	19	22	22	22	22

Art.0400

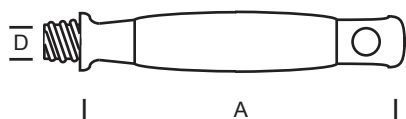


Assicella per plafone tipo leggero
Plastic head for wall brush light type



misura		15x5	15x6	16x6,5	17x7	18x8
A	mm.	49	60	64	69,5	80
B	mm.	150,5	149,5	158	168,5	180
C	mm.	11	11	11	11	11
D	mm.	19	22	22	22	22

Manico legno gomma misura grande
Wooden handle with rubber grip big size

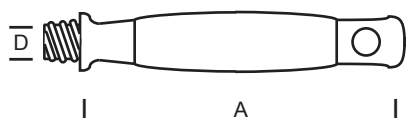


misura		Passo piccolo	Passo grande
A	mm.	145	145
D	mm.	19	22



Art.0210 L/G

Manico legno gomma misura piccola
Wooden handle with rubber grip small size

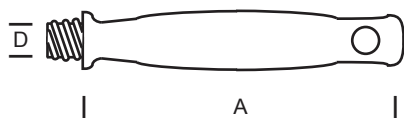


misura		Passo piccolo
A	mm.	133
D	mm.	19



Art.0211 L/G

Manico plastica per plafone
Plastic handle for wall brush



misura		Piccolo	Grande
A	mm.	144	146
D	mm.	19	22

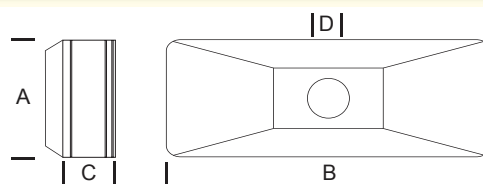


Art.0210

Art.0600



Assicella per plafonetta
Plastic head for wall brush

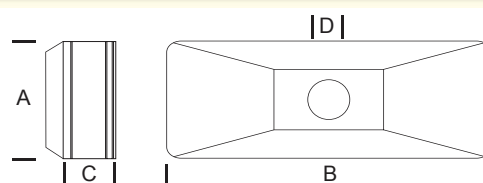


misura		7x3	10x3	12x3	14x4	15x5
A	mm.	33	35	35	44	49
B	mm.	73	104	124,5	145	150,5
C	mm.	28	28	28	28	28
D	mm.	19	19	19	19	19

Art.0602



Assicella per plafonetta 2 colori
Two colours plastic head for wall brush

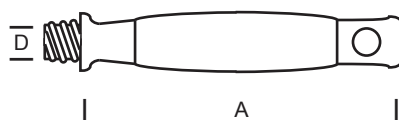


misura		7x3	10x3	12x3	14x4	15x5
A	mm.	33	35	35	44	49
B	mm.	73	104	124,5	145	150,5
C	mm.	28	28	28	28	28
D	mm.	19	19	19	19	19

Art.0260

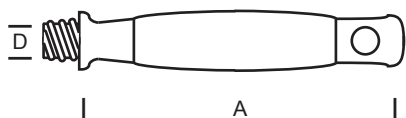


Manico bicomponente plastica gomma per plafone mis. grande
Two-component plastic handle with rubber grip big size



misura		Passo piccolo	Passo grande
A	mm.	145	145
D	mm.	19	22

Manico bicomponente plastica gomma per plafone mis. piccola
Two-component plastic handle with rubber grip small size

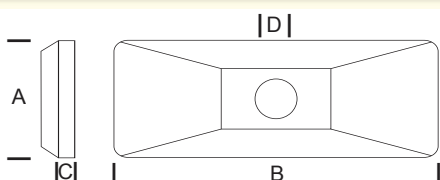


misura		Passo piccolo	
A	mm.	133	
D	mm.	19	



Art.0261

Assicella per plafone 2 colori innesto a baionetta
Two colours plastic head for wall brush with bayonet coupling

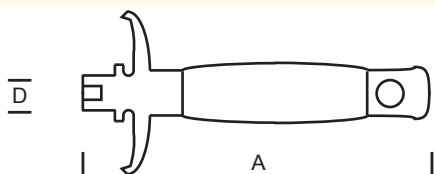


misura		15x5	15x6	16x6,5	17x7	18x8
A	mm.	49	60	64	69,5	80
B	mm.	150,5	149,5	158	168,5	180
C	mm.	11	11	11	11	11
D	mm.	19	22	22	22	22



Art.0205

Manico legno gomma innesto a baionetta per art. 205
Wooden handle with rubber grip for art. 205

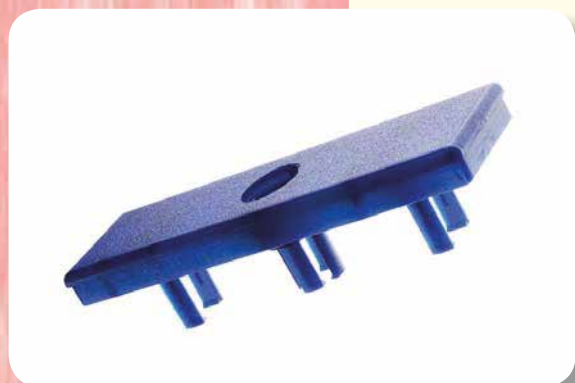


misura		grande	
A	mm.	145	
D	mm.	19	

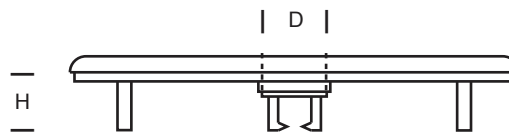


Art.0215 I/M

Art.0300



Assicella plastica per plafoncino
Flat plastic head for wall brush

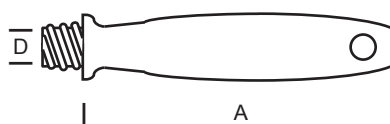


misura		7x3	10x3	12x3	14x4	15x5
H	mm.	27	27	27	27	27
D	mm.	19	19	19	19	19

Art.0310



Manico per plafoncino
Plastic handle for flat wall brush



misura		Piccolo	Grande
A	mm.	122	138
D	mm.	19	19

Art.0310 V



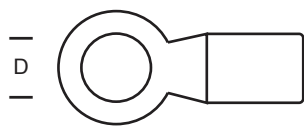
Manico ottagonale per plafoncino
Plastic handle for flat wall brush



misura		Piccolo	Grande
A	mm.	128	138
D	mm.	19	19

Supporto plastica per plafoncino
Plastic clip for wall brush

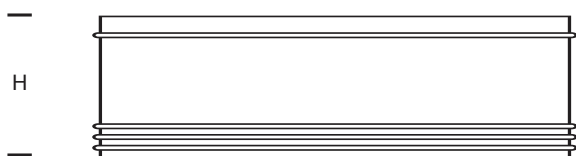
Art.0320



misura		Ø
D	mm.	20

Ghiera plafoncino banda stagna H. 30 mm.
Tin plated ferrule for wall brush H. 30 mm.

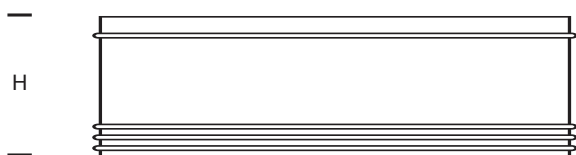
Art.0330 BS



misura		7x3	10x3	12x3	14x4	15x5
H *	mm.	30	30	30	30	30

Ghiera plafoncino nichelata H. 30 mm.
Nickel plated ferrule for wall brush H. 30 mm.

Art.0330 NK



misura		7x3	10x3	12x3	14x4	15x5
H *	mm.	30	30	30	30	30

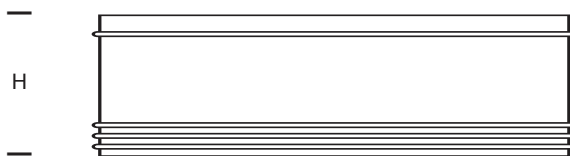
* altre altezze e misure sono disponibili su richiesta
* different heights and sizes are available on request

VIPLAST

Art.0330 RA



Ghiera plafoncino ramata H. 30 mm.
Copper plated ferrule for wall brush H. 30 mm.

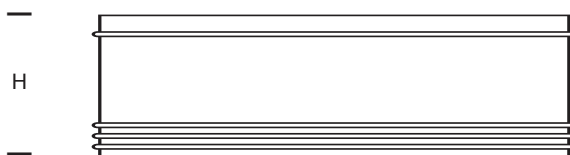


misura		7x3	10x3	12x3	14x4	15x5
H *	mm.	30	30	30	30	30

Art.0330 OT



Ghiera plafoncino ottonata H. 30 mm.
Brass plated ferrule for wall brush H. 30 mm.

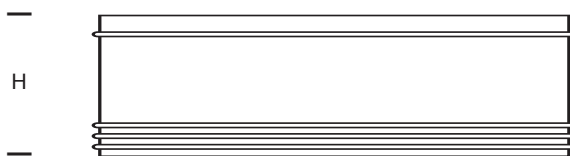


misura		7x3	10x3	12x3	14x4	15x5
H *	mm.	30	30	30	30	30

Art.0330 IN



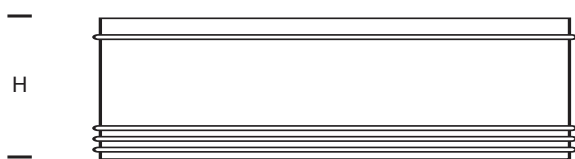
Ghiera plafoncino inox H. 30 mm.
Stainless steel ferrule for wall brush H. 30 mm.



misura		7x3	10x3	12x3	14x4	15x5
H *	mm.	30	30	30	30	30

Ghiera plafoncino plastica
Plastic ferrule for wall brush

Art.0330 PL

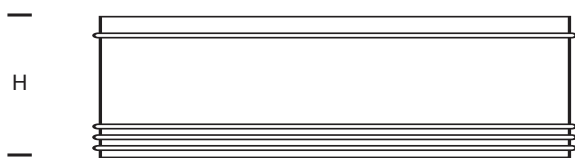


misura		7x3	10x3	12x3	14x4
H	mm.	30	32	32	32



Ghiera plafoncino ovale ramata
Copper plated oval ferrule for wall brush

Art.0330 OV



misura		7x3	10x3	12x3	14x4	15x5
H *	mm.	30	30	30	30	30

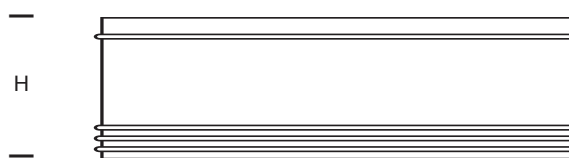


* altre altezze e misure sono disponibili su richiesta
* different heights and sizes are available on request

Art.0335 BS



Ghiera banda stagna tipo "Canarie"
Tin plated ferrule "Canarie" type

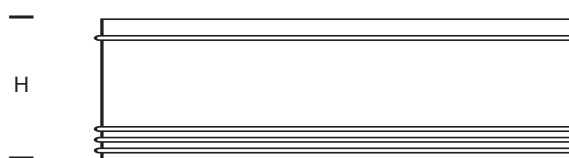


misura		4"	5"	6"	8"
H *	mm.	30	30	30	30

Art.0335 RA



Ghiera ramata tipo "Canarie"
Copper plated ferrule "Canarie" type



misura		4"	5"	6"	8"
H *	mm.	30	30	30	30

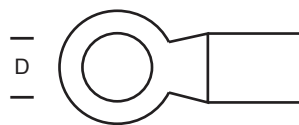
* altre altezze e misure sono disponibili su richiesta
* different heights and sizes are available on request

V/PLAST

Art.0221



Supporto una ala ferro zincato per plafoni
Zinc plated single clip for wall brushes



misura		Ø	Ø
D	mm.	20	22

Art.0222



Supporto due ali ferro zincato per plafoni
Zinc plated double clip for wall brushes

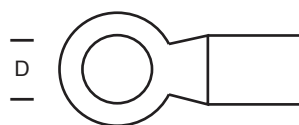


misura		Ø	Ø
D	mm.	20	22

Art.0224



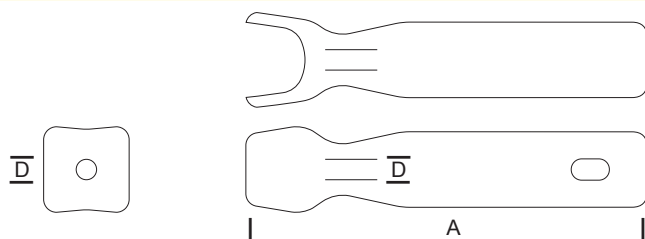
Supporto una ala ferro nichelato per plafoni
Nichel plated single clip for wall brushes



misura		Ø
D	mm.	22

Manico bicomponente per rulli piccolo
Two-component handle for rollers, small

Art.0916

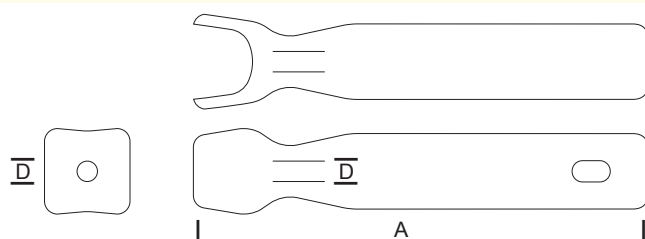


misura		0916
A	mm.	137
D	mm.	6, 7, 8



Manico bicomponente per rulli grande
Two-component handle for rollers, big

Art.0926



misura		0926
A	mm.	156
D	mm.	6, 7, 8



Flange per rullo
Paint roller cap



Ø 55



Ø 48



Ø 43

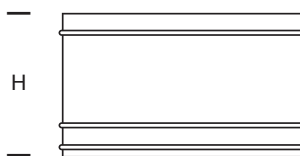


Art.0900 F

Art.0150 NK



Ghiera nichelata tipo "Americana"
Nickel plated ferrule "Americana" type

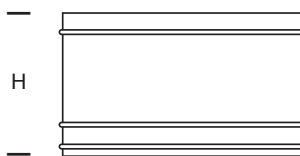


misura		1"	1 1/2"	2"	2 1/2"	3"	4"
H *	mm.	40	40	40	40	40	40

Art.0150 IN



Ghiera inox tipo "Americana"
Stainless steel ferrule "Americana" type

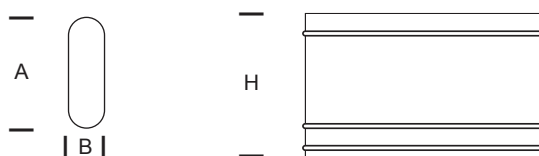


misura		1"	1 1/2"	2"	2 1/2"	3"	4"
H *	mm.	40	40	40	40	40	40

Art.0150 AM

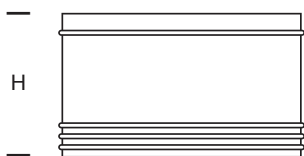


Ghiera plastica per manici legno "Americane"
Plastic ferrule for woodem handle "Americana" type



misura		25	30	40	50	60	75
A	mm.	30	35	42	53	64	75
B	mm.	21	21	22	23	23	25
H	mm.	40	40	40	40	40	40

Ghiera banda stagna per "Radiatori"
Tin plated ferrule "Radiator" type

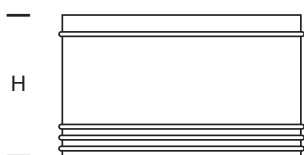


misura		20	30	40	50	60	70
H *	mm.	40	40	40	50	50	50

Art.0510 BS



Ghiera nichelata per "Radiatori"
Nikel plated ferrule "Radiator" type

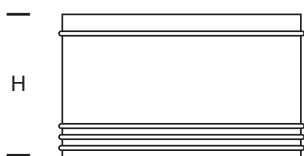


misura		20	30	40	50	60	70
H *	mm.	40	40	40	50	50	50

Art.0510 NK



Ghiera ramata per "Radiatori"
Copper plated ferrule "Radiator" type



misura		20	30	40	50	60	70
H *	mm.	40	40	40	50	50	50

Art.0510 RA



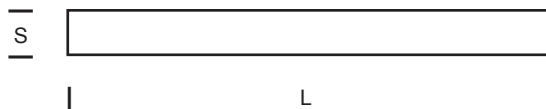
* altre altezze e misure sono disponibili su richiesta
* different heights and sizes are available on request

V/PLAST

Art.0145



Spessori in rotolo
Brush strips on rolls

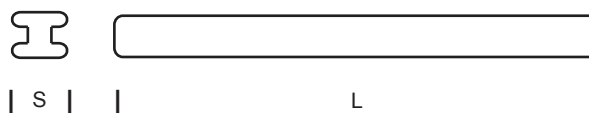


L	mm.	15	21	31	41	51	61	71	81	91
S	mm.	2,5	2,5	2,5	2,5	2,5	2,5	2,5	2,5	2,5
S	mm.	3,5	3,5	3,5	3,5	3,5	3,5	3,5	3,5	3,5
S	mm.	4,5	4,5	4,5	4,5	4,5	4,5	4,5	4,5	4,5

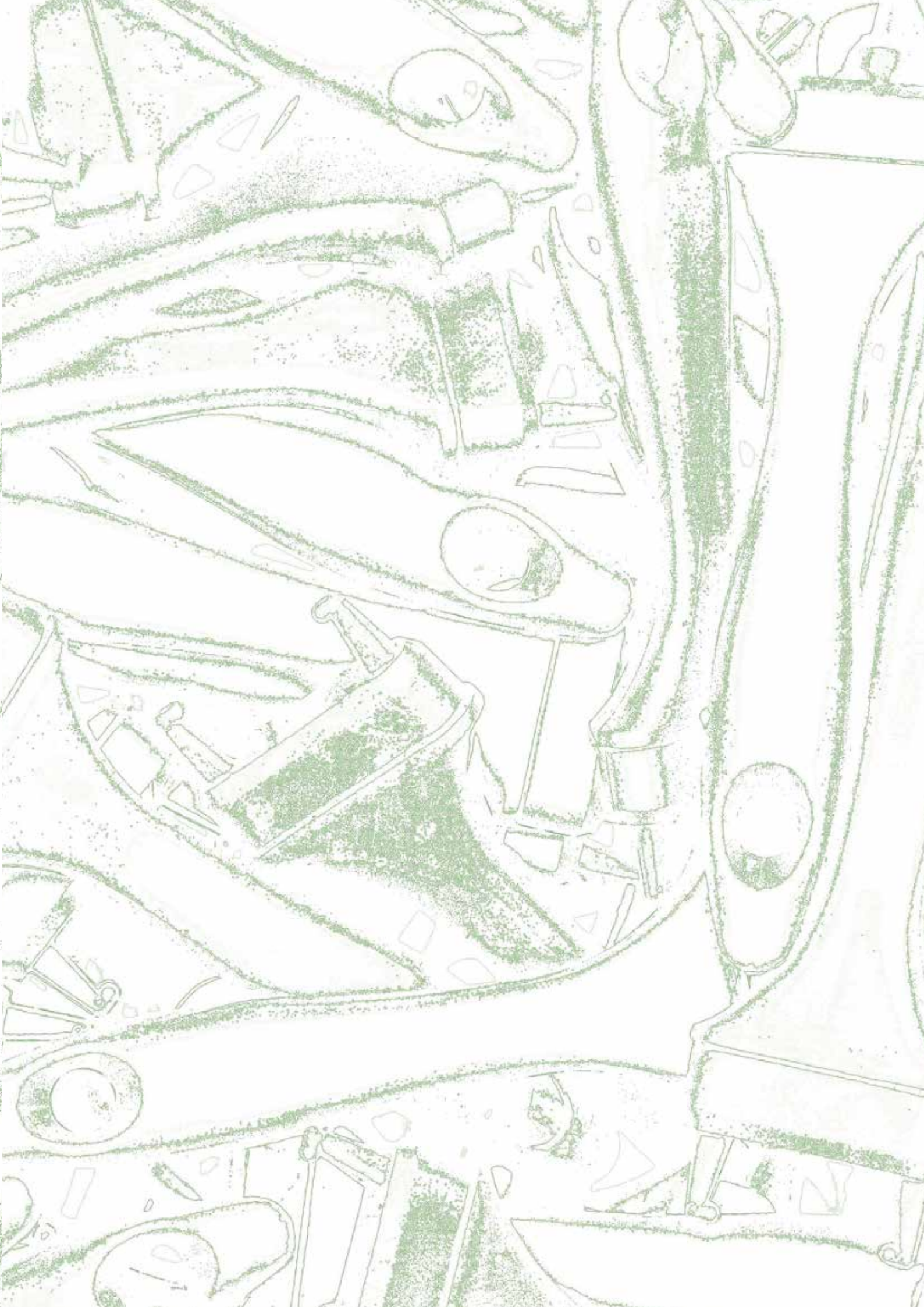
Art.0340



Listelli per plafoncino 7 mm. - 4,5 mm.
Strips for wall brush 7 mm. - 4,5 mm.



misura	7x3	10x3	12x3	14x4	15x5
L	59	89	109	129	139
S	4,5	4,5	4,5	4,5	4,5
S	7,0	7,0	7,0	7,0	7,0





ViPLAST

STAMPAGGIO MATERIE PLASTICHE

Via del Progresso, 20
35010 Vigonza / PD (Italy)
Tel. +39 049 8930725
www.viplastsrl.it
e-mail: info@viplastsrl.it